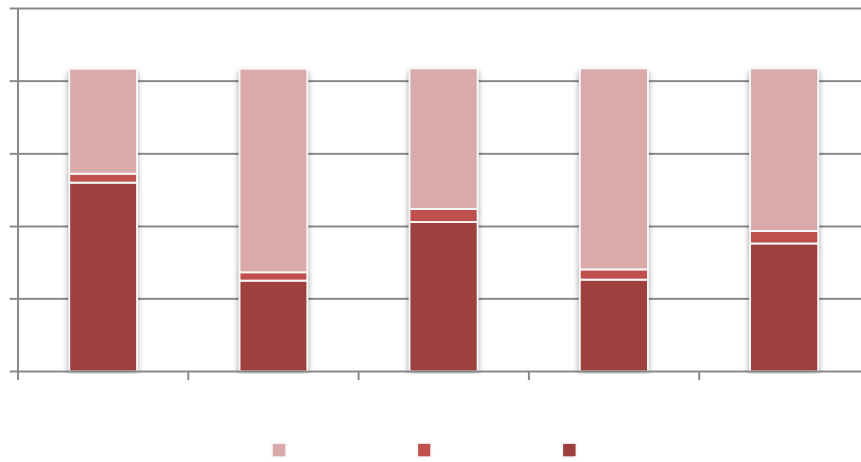


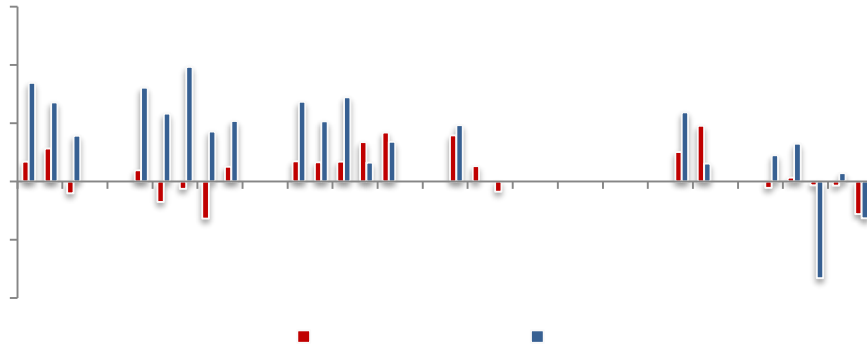
## 目 录

.....	2
.....	2
.....	2
.....	3
.....	3
.....	3
30 .....	4
.....	4
.....	4
.....	5
30 A .....	5
.....	5
.....	6
1 2020 GDP 1015986 2.3%.....	6
2 2 PMI 50.9 51.5.....	6
3 30%.....	7
4 .....	8
5 " " .....	9
6 1 .....	10

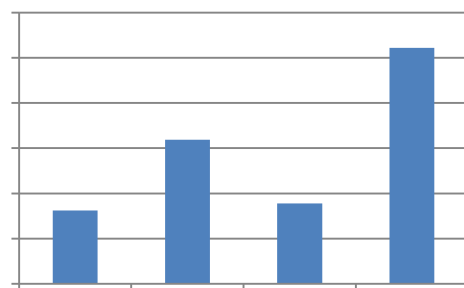




	-75.01	-126.91
	412.24	749.30
	811.81	3855.54




QFI I	24492.81	2.81%	3.76%
	24470.34	2.80%	3.76%
	22.47	0.00%	0.0034%



---

30 A

---



---

1 2020 GDP 1015986 2.3%

2 28 2020

1015986 2.3%

77754 3.0% 384255

2.6% 553977 2.1%

7.7% 37.8% 54.5%

0.5

2.2 0.7

2 2 PMI 50.9 51.5

2 PMI 50.6% 2

51.9% 51.5%

1.6 0.8

55.0%

48.8%

49.6% 1.4 0.2



60.8%

66.7%

4

60.0%

70.0%

1.3

58.5%

PMI 52.2%

0.1

PMI

49.6%

48.3%

1.8

1.1

59.2%

1.3

3

36.2%

18.3%

3

30%

2 24



0.1% 2001 9

12% 2015

8.78% 207 2015 7

$0.25\% + 0.1077\% = 0.3577\%$  30%

0.3877% 8% 0.1%

1993

Wind

4

10

1.4% 1.5% 1.6%

25

10

1.6%

1.62%

1.5%

"

"

" "



---

			"	"	26		
225	29000	3.99%	2020	4	1		
	2.80%						
			26	22			
0.40%	1.58%			3.5%	500	2.45%	
					"	"	
5	"						
2020						5.3%	
		3.6%					1
		1		1.6	"	"	
10.1%	2021						
						2021	
3.2%~3.3%			3.3				2021
							"
"							
					2020		
3.2%							
	2021						



"

"

2021 " "

6 1

2021 1

	1	4				0.6%	
	0.3					0.5%	0.6%
1.0%	0.3%			1.3%		0.7	
				0.9%	1.3%	1.4%	1.7%
						31	
					0.4%		0.3
	35						0.2%
0.3%			0.1				
	1						4.2%
9.6%			0.3	1.0			
			4.1%	2.5%		0.1	0.3
					3.3%		0.2
			1.5%			0.1	

Wind

---