

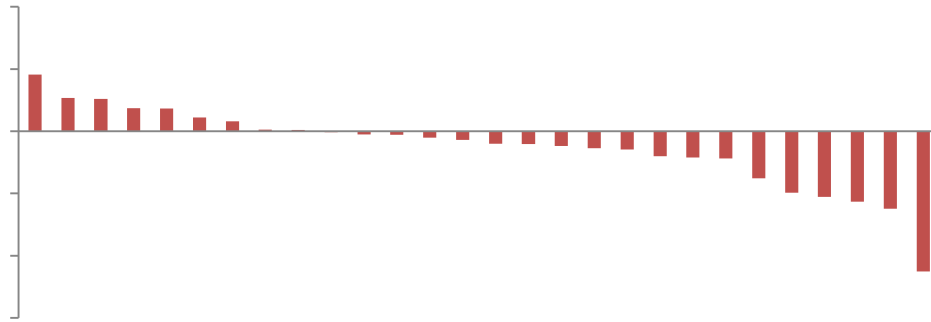
目 录

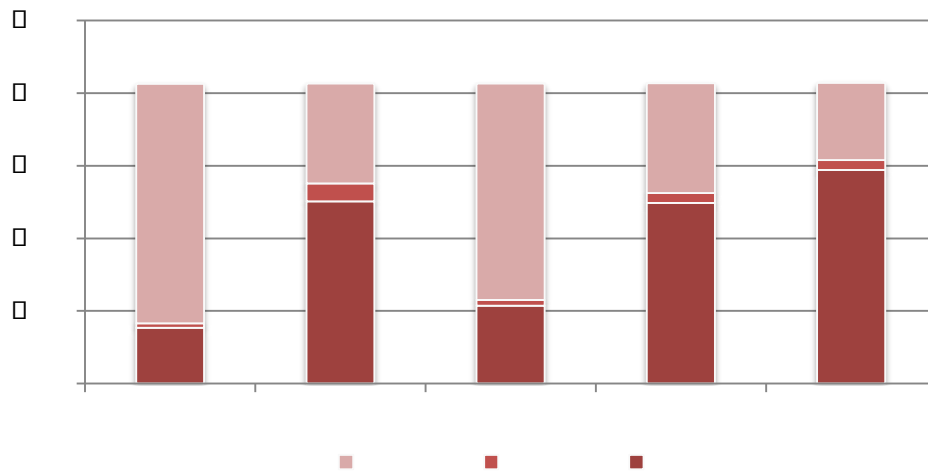
.....	2
.....	2
.....	2
.....	3
.....	3
.....	3
30	4
.....	4
.....	4
.....	5
30 A	5
.....	5
.....	6
1 2021 " "	6
2 7	7
3 2020	8
4 1.9 " "	8
5 " "	9
6 A 10 1	10

	3566.38	-0.10%
	15031.70	-1.88%
	10109.69	-2.03%
	3089.94	-1.93%
300	5458.08	-0.68%
	28573.86	2.50%
500	3768.25	-1.48%
(WIND 2021-1-11 2021-1-15)		

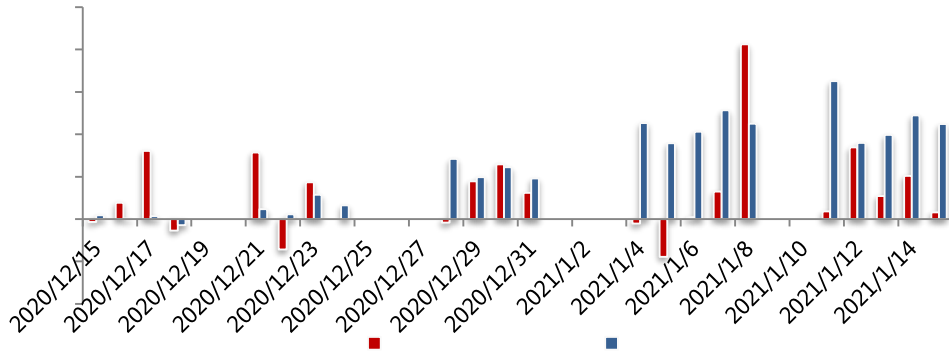
2021-1-11 2021-1-15 A

0.10% 3566.38 1.88% 15031.70
1.93% 3089.94

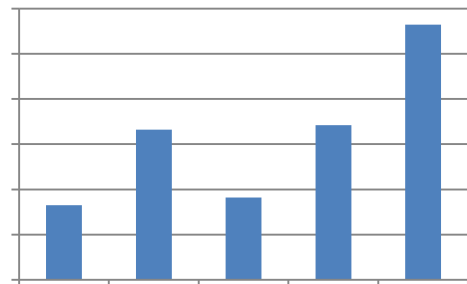
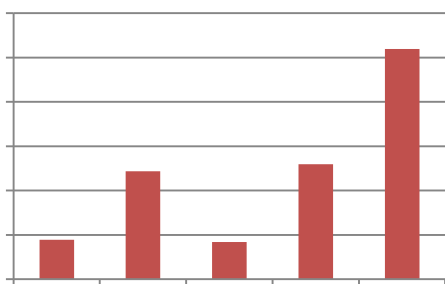




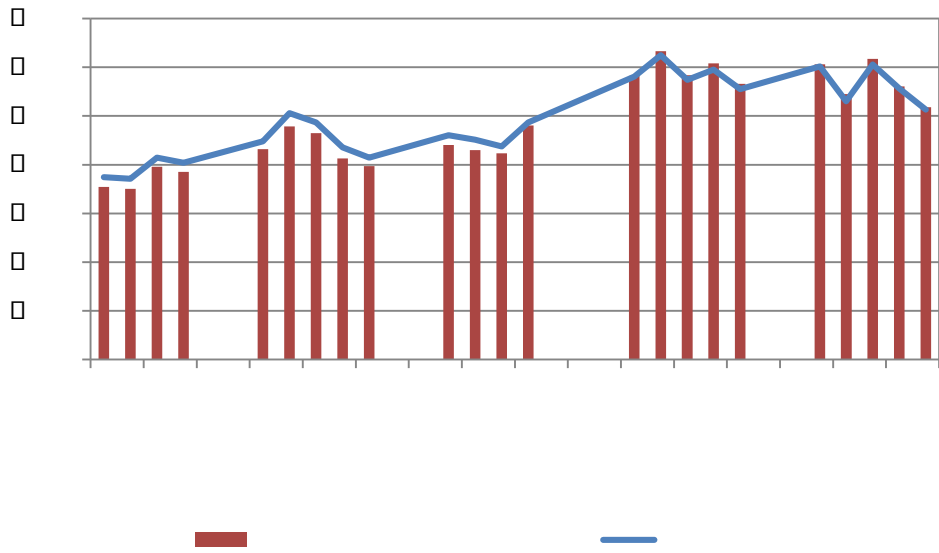
	179.59	702.13
	370.86	1357.30
	370.86	1357.30



QFI I	24661.21	2.78%	3.76%
	24660.68	2.78%	3.76%
	0.5227	0.00%	0.0001%



30 A



12

12

1 2021 " "

1 15

2021

1 15

M2

M2

M2

M2

2020

M1

M1



CPI
CPI

" "

G20

2

7

2020

2020 6

7

2020

9.2

2019

0.9

11%

2019

1.4

17.5%

2020

" "

9.37

1%

3 2020

1 12

2020

12

M1

M2

"

"

12

M2

10.1%

0.6

10.7%

12

M1

8.6%

1.4

5

M1

M1

2020

M2

1.4

19.6

2.8

34.86

9.2

6

"

20

30

"

4

1.9

"

"

1 14

1.9

"

"



1400
 600
 2000
 400
 9
 15 500 200
 1.9 " "
 V U
 20
 GDP GDP

5 " "
 1 15
 8

2020 8
 2016 44.8% 28% "
 "

6 A 10 1

2021 1 15

10 1

A " "

A

A

2015

2017 2019 A

MSCI A

2000 3500

2019 2020 A

2020 + 2

1.6 2016 2019 4

2021

A

A
